

MATERIALS

1 FAT QUARTER 18"X 22" OR SEVERAL TO MIX AND MATCH PATTERN PIECES

METAL MEASURING TAPE\*, CUT TWO PIECES TO A LENGTH OF 3-3/4" or 1/4 " LESS THAN FINISHED WIDTH. FILE SHARP EDGES.

*\*INSTEAD OF THE MEASURING TAPE YOU MAY USE VELCRO OR A SNAP.*

CUTTING DIRECTIONS (CUT ALL PIECES ALONG THE LONGEST EDGE OF THE FAT QUARTER(S)

1 PC 5" X 15" FOR THE OUTSIDE

1 PC 5" X 19" FOR THE LINING

2 PCS 3" X 3" FOR THE PRAIRIE POINTS (FOLD AND PRESS TO CREATE TRIANGLES)

AT LEAST 3 OR MORE PCS 2-1/4 X 22" (TOTAL FINISHED LENGTH 60" – 66") FOR THE STRAP



ASSEMBLY

WITH **WRONG SIDES** TOGETHER CENTER THE 5" X 15" OUTSIDE PIECE ON THE 5" X 19" LINING PIECE. YOU SHOULD HAVE 2 INCHES OF THE LINING PIECE EXTENDING ON BOTH ENDS OF THE OUTSIDE PIECE. PIN AND STITCH ALONG THE 5" EDGES CLOSE THE EDGE TO SECURE THE TWO PIECES TOGETHER. (YOU MAY ADD THIN BATTING OR PADDING BETWEEN THE FABRICS AND QUILT IT IF YOU LIKE.)



PRESS THE TWO INCH EXTENSIONS DOWN OVER THE STITCHING. OPEN OUT. IF YOU ARE USING A SNAP OR VELCRO SECURE THEM TO THE LINING PIECE JUST BELOW THE PRESSED TOP EDGE. FOLD UNDER ABOUT 3/4 INCH ON THE LINING EXTENSION AND FOLD BACK DOWN OVER THE STITCHING. MAKE SURE THE CASING WILL FIT YOUR MEASURING TAPE; ADJUST FOLD IF NECESSARY. IF YOU ARE USING VELCRO OR A SNAP MAKE SURE THE FOLD DOES NOT INTERFERE WITH THE FASTENER. SLIP THE PRAIRIE POINTS AT CENTER 1/4 INCH UNDER THE FOLDED TOP, PIN AND STITCH CLOSE TO THE FOLDED EDGE TO CREATE THE CASING AND THE TOP OF THE SACK. YOU MAY EDGE STITCH THE TOP OF THE BAG BUT **MAKE SURE THE CASING WILL FIT THE TAPE.**

(APPROX SIZE 5" X 7", INSIDE 4" X 6")



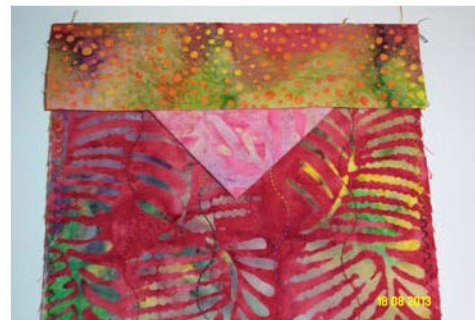
FOLD DOWN 2" EXTENSIONS AND PRESS.



FOLD UNDER 1/2 TO 3/4 INCH TO FORM THE CASING. IF YOU ARE USING VELCRO OPEN OUT AND SECURE THE VELCRO TO THE LINING.

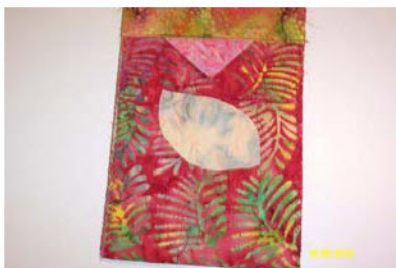


SECURE VELCRO ON LINING PIECE JUST BELOW THE FOLD



MAKE SURE EDGE STITCHING DOES NOT INTERFERE WITH YOUR FASTENER.

**ADD YOUR NAME: DECIDE THE FRONT OF YOUR BAG. SOMEWHERE BELOW THE PRAIRIE POINT AND ABOVE THE BOTTOM FOLD WRITE YOUR NAME ON THE BAG ITSELF OR SEW OR FUSE ON ANOTHER PIECE OF FABRIC WITH YOUR NAME WRITTEN ON IT. YOU MAY ALSO PIN A SEPARATE NAME TAG TO THE BAG.**



FOLD THE BAG SO THAT THE FOLDED TOPS AND SIDES ARE EVEN AND THE LINING PIECE IS ON THE INSIDE. IF USING MEASURING TAPE, SLIP THE PIECES IN THE CASINGS (IF YOU WANT IT TO CLICK WHEN OPENING THEN THE CURVED SIDE SHOULD BE TOWARD THE INSIDE, BUT IT MAY BE HARDER TO OPEN; YOU MAY HAVE THE CURVED SIDE TOWARD THE OUTSIDE.) MAKE SURE THE TAPE IS OUT OF THE WAY AND BASTE THE SIDES CLOSED ABOUT 1/4 INCH FROM THE EDGE.

**STRAP.** SEW THE STRAP PIECES TOGETHER WITH BIAS SEAMS AS YOU WOULD WITH A BINDING. FOLD IN HALF LENGTHWISE AND PRESS THE LENGTH, OPEN OUT AND PRESS BOTH SIDES TO THE FOLD IN THE CENTER, FOLD IN HALF AND PRESS THE STRAP. TO CHECK THE LENGTH, PIN EACH END OF THE STRAP STARTING FROM THE BOTTOM. *EXTEND STRAP 1" BEYOND THE BOTTOM OF THE BAG ON EACH SIDE.* CHECK TO SEE IF YOU LIKE THE LENGTH, ADD OR SUBTRACT LENGTH IF NEEDED.

CELL PHONE SACK GUILD NAME TAG –

(APPROX SIZE 5" X 7", INSIDE 4" X 6")

3 OF 3



FOLD AND PRESS STRAP



OPEN OUT AND PIN TO SACK.DO NOT

TWIST STRAP.



EXTEND ABOUT 1 INCH AND FOLD UP

OPEN OUT THE STRAP AND PIN TO ONE SIDE EDGE OF THE BAG RIGHT SIDES TOGETHER; EXTEND THE STRAP ABOUT 1" BEYOND THE BOTTOM THEN FOLD UP OVER THE BOTTOM AND PIN. **MAKING SURE YOU DO NOT TWIST THE STRAP** PIN THE OTHER END OF THE STRAP THE SAME WAY ON THE OPPOSITE SIDE OF THE BAG. STITCH TO THE BAG USING **A 1/2 SEAM ALLOWANCE**. (**PUSH MEASURING TAPE OUT OF THE WAY**) FOLD THE STRAP OVER TO THE OTHER SIDE OF THE SACK AND SEW DOWN CLOSE TO THE FOLD, CONTINUING SEWING ALONG THE ENTIRE LENGTH OF THE STRAP TO THE OTHER SIDE OF THE SACK. YOU MAY STITCH THE FOLDED SIDE ALSO IF YOU LIKE.



FOLD STRAP TO FRONT AND STITCH CLOSE TO FOLD.  
CONTINUE STITCHING STRAP CLOSED AND CONTINUE  
TO THE OTHER SIDE OF THE BAG AND STITCH THE  
STRAP DOWN OVER THE BAG EDGE.

